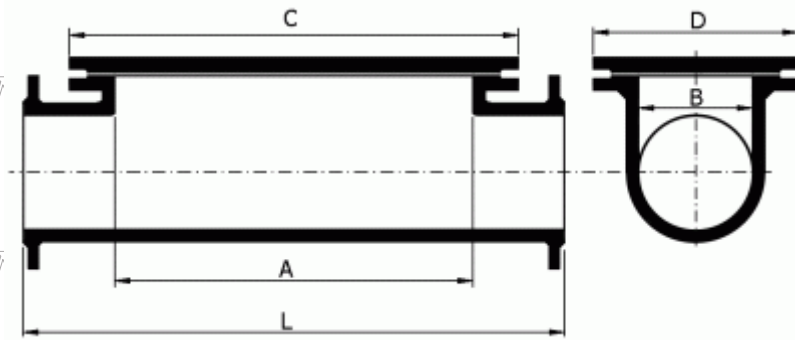




Double Flanged Hatchbox



Unit: mm

DN	L	Clear Opening		Cover		Weight (kg)			
		A	B	C	D	PN 10	PN 16	PN 25	PN 40
80	800	400	80	520	200	65.0	65.0	65.0	65.0
100	800	400	100	535	235	70.0	70.0	71.0	71.0
150	800	400	150	550	300	85.0	85.0	87.0	91.2
200	800	400	200	560	360	98.9	98.5	102.7	113.3
250	950	500	250	675	425	140.8	140.0	147.8	168.0
300	950	500	300	685	485	188.8	188.0	199.2	230.2
350	950	500	350	705	555	245.8	252.0	268.6	-
400	1100	600	400	820	620	298.8	310.0	332.6	-
450	1100	600	450	820	670	349.8	367.0	398.0	-
500	1200	600	500	830	730	391.6	422.0	445.4	-
600	1200	600	600	845	845	421.0	474.0	502.4	-